

LAND & SEA SCAPES - a Mixed Media Techniques approach

with Lorraine Parker

CODE: LM 204M **DATE:** 13-15 May

Duration: 3 days **Skill level;** Intermediate to Advanced

Sewing Machine: Basic ZIG ZAG



Workshop participants will create an individual scene based on an inspiration of their choice of the sea, a pond, a river or lake.

This may be from a photo or picture.

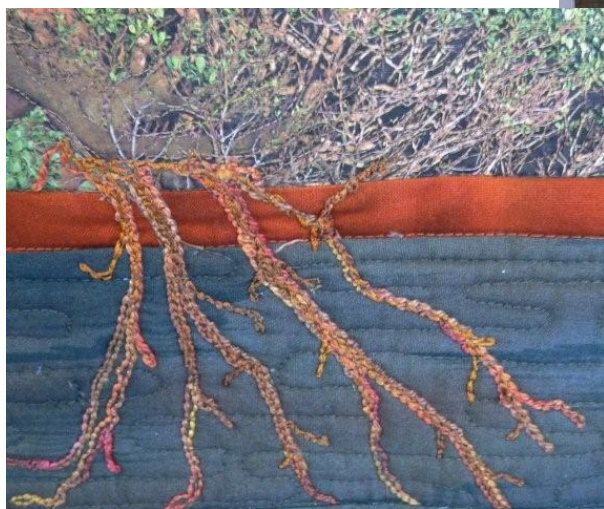
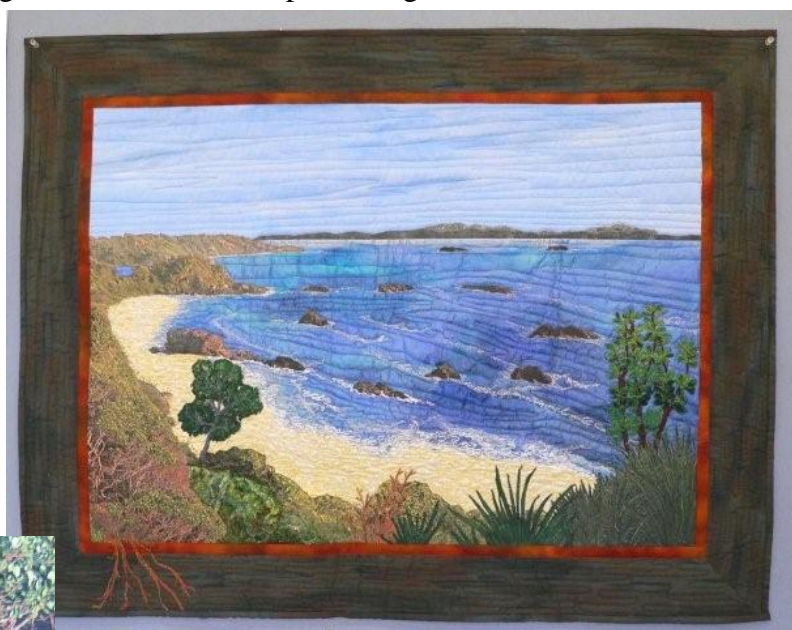
Size of project: Approximately 76cm x 56cm, (30in x 22in) with borders or 61cm x 41cm (24in x 16 in) without. The approximate size limit is needed in order to cover the interesting and varied techniques offered in this workshop.

Specific areas of Focus.

- Silk fabric making and its incorporation as sea/water (as well as other ways it could be used)
- Photo to fabric transfer as a means of enhancing creative work
- Embellishment with thread including bobbin work if time permitting.
- Fabric painting

The **Images illustrate** are examples of expected student outcome.

- The image “Nobby’s Beach” is an illustration of what can be achieved using the techniques presented in this workshop - eg tree made using free motion bobbin work and free motion stitching, roots by bobbin work, rocks from photo images – (photo to fabric transfer) highlighted with free motion stitching,



Original inspirational Photograph of Nobby's Beach.



Special Preparation: Participants will need to bring their inspirational photograph or picture as a JPEG image on a

USB stick ready for manipulation. A photograph is recommended as it will give a better resolution than a scanned image.

NOTE: There will be a cost for fabric sheets and printing ink in this workshop – approximately \$6.00 – to be paid to the tutors at the beginning of the workshop.

Fabric Requirements

- .3 metre 100% cotton prewashed poplin or homespun
- .5 metre cotton homespun or
 - patchwork fabric for the backing for your water (colour in lighter shade than the sea created from silk tops)
 - .4 metre patchwork fabric for any sand (printed gives a better result than plain)
 - fabric for any mountains or distant scenery - bring a selection from your stash, mid to light green greys work well.
 - fabric for any foreground images such as grass or shrubs ∞
 - .5 m vlie-so-fix or alternative appliqué aid (stick both ways when ironed)
 - .7 vlieselene **H630** (also known as iron on batting) – must be this thickness
 - .5 tear-a-way, thin or medium (may be used)
 - **.6 border fabric** this should compliment your colours and ‘frame’ your work. Dark subtle pattern or tones work well and **.25** m of a contrast “highlight” fabric for the narrow insert. Alternatively you may decide to leave out the border and finish your work with a binding.
 - Batting for sandwich 10cm larger than your finished work
 - Fabric backing 10cm larger than your finished work

Special Requirements

- 1 pkt or 12 grms. **silk tops** if you are happy with the variation in the pack to match your inspiration
This can be purchased through www.thethreadstudio.com OR kerryheinzl@hotmail.com
- 1 metre white tulle (stiff net)
- at least 4 A4 sheets pre- prepared fabric sheets for ink jet photo transfer
- **small** bag of green scraps of patchwork greens, silk, satin, glitz, whatever and yarn scraps
- .3 m. black bridal veil
- soluble clear film or soluble vilene – about 30cm x 30cm
- embroidery hoop- plastic spring load type -18cm size is best
- white DMC perle crochet yarn – size 8 and /or cotton perle size 8 (comes in a skein)
- **optional** – blues in size 8 perle
- any other assortment of blues, greens suitable for yarn embellishment – see www.thethreadstudio.com and www.colourstreams.com.au
- textile medium
- old towel
- 4 pegs and 4 safety pins
- small bowl about 1 cup size for detergent mix (detergent supplied)
- fabric paint; blue and white.
- foam brush – about 2.5 cm and artist flat brush about 1 cm

- artist mixing palette OR plastic plate is fine
- marker pen and ruler
- hair dryer - must be tagged.

General Requirements

- **Sewing machine** in good working order, include darning foot (clear is excellent), instruction book, free motion couching foot if your machine has this as an available attachment, bobbins (filled with shades of blue or grey, one beige and 2 shades of green) and **additional bobbin case** (if relevant to your machine or if you have one) for bobbin work, **flat bed and walking foot**. Please know how to drop your feed dogs.
- **Machine needles**- size 70s, 80s, metafile and / or size 80 embroidery
- **Sewing kit** – scissors, good quality pins, tape measure, quilters safety pins and unpicker (although we won't need it)
- **Threads**- same colour way as your water, sky and landscape. Select normal thread (cotton or polyester), embroidery 'sheen' threads, white and variegated blues and greens. A touch of metallic can make a difference.
- **Cutting board, quilters ruler** and rotary cutter
- **Paper** – for planning your scene, approx. 16 x 24inches (42cm x 62cm), HB and 2b pencil, eraser

For further clarification or information please contact

Lorraine Parker 0417232923 OR email lorraine.parker2@bigpond.com